

# MODULAR WETLAND SYSTEMS - LINEAR UG VAULT TYPE



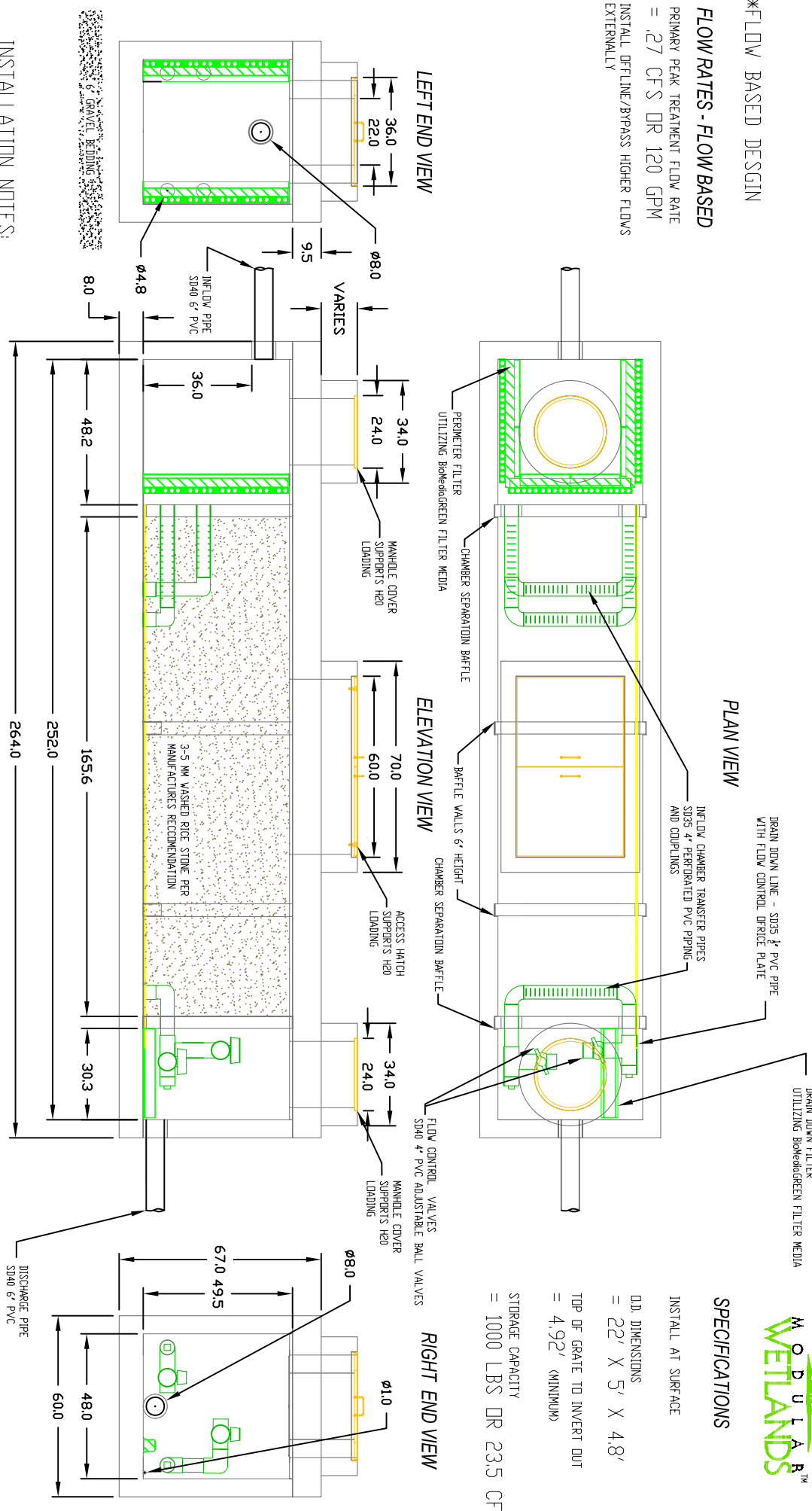
\*FLOW BASED DESIGN

## FLOW RATES - FLOW BASED

PRIMARY PEAK TREATMENT FLOW RATE  
= .27 CFS DR 120 GPM  
INSTALL OFFLINE/BYPASS HIGHER FLOWS  
EXTERNALLY

## SPECIFICATIONS

INSTALL AT SURFACE  
D.O. DIMENSIONS  
= 22" X 5' X 4.8'  
TOP OF GRATE TO INVERT OUT  
= 4.92' (MINIMUM)  
STORAGE CAPACITY  
= 1000 LBS DR 23.5 CF



## INSTALLATION NOTES:

1. INSTALL UNIT ON LEVEL BED OF GRAVEL OF AT LEAST 6" IN DEPTH
2. CONCRETE 28 DAY COMPRESSIVE STRENGTH FC=5,000 PSI.
3. REINFORCING ASTM A-615, GRADE 60.
4. SUPPORTS AN H20 LOADING AS INDICATED BY AASHTO.
5. ALL WALLS ARE 6" THICK, BAFFLES ARE 4" THICK BOTTOM 8" THICK, TOP 10" THICK.
6. JOINT SEALANT: BUTYL RUBBER SS-S-00210

PATENT PENDING

MODULAR WETLAND SYSTEMS INC.  
P.O. BOX 869  
OCEANSIDE, CA 92049  
www.ModularWetlands.com

PROPRIETARY AND CONFIDENTIAL

THE INFORMATION CONTAINED IN THIS DRAWING IS THE SOLE PROPERTY OF MODULAR WETLAND SYSTEMS INC. ANY REPRODUCTION IN PART OR AS A WHOLE WITHOUT THE WRITTEN PERMISSION OF MODULAR WETLAND SYSTEMS INC. IS PROHIBITED.

NAME	DATE	COMMENTS:
DRAWN P. Ashoff	7.23.07	EDITED

TITLE:	MWS LINEAR - VAULT TYPE
SIZE:	DWG. NO. MWS-L-V
SCALE:	1:50
UNITS:	INCHES
SHEET:	1 OF 1