

# MODULAR WETLAND SYSTEMS - LINEAR VAULT TYPE



\*FLOW BASED DESIGN

## FLOW RATES - FLOW BASED

PRIMARY PEAK TREATMENT FLOW RATE = .27 CFS DR 120 GPM

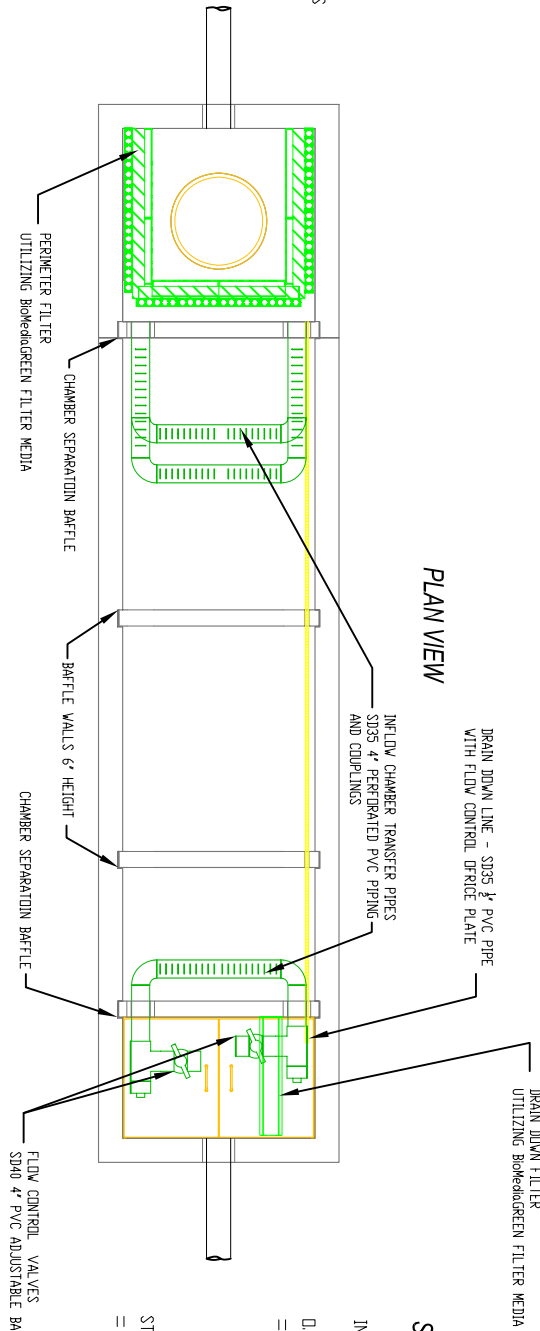
INSTALL OFFLINE/BYPASS HIGHER FLOWS EXTERNALLY

## SPECIFICATIONS

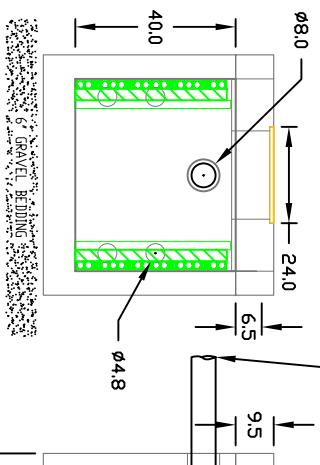
INSTALL AT SURFACE

O.D. DIMENSIONS = 22' X 5' X 4.8'

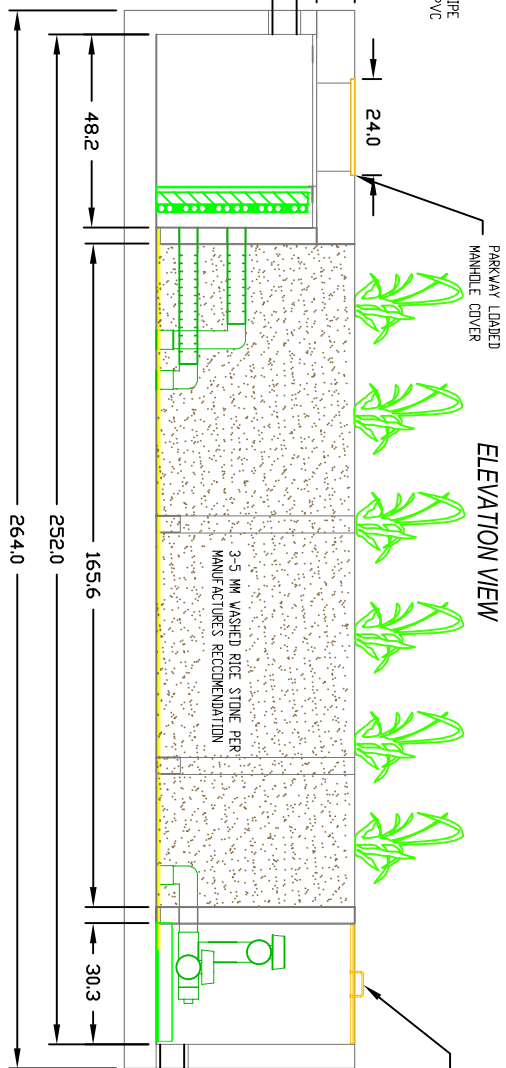
STORAGE CAPACITY = 1000 LBS DR 23.5 CF



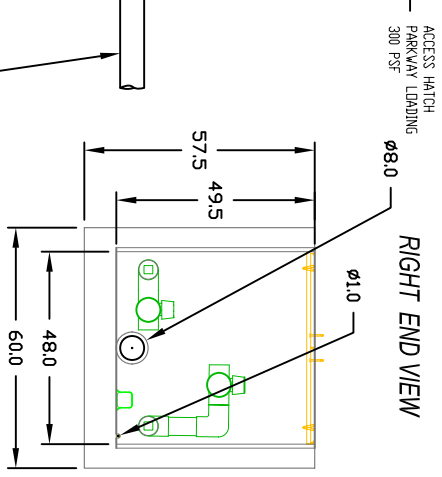
## LEFT END VIEW



## ELEVATION VIEW



## RIGHT END VIEW



## INSTALLATION NOTES:

1. INSTALL UNIT ON LEVEL BED OF GRAVEL OF AT LEAST 6" IN DEPTH.
2. CONCRETE 28 DAY COMPRESSIVE STRENGTH FC=5,000 PSI.
3. REINFORCING ASTM A-615, GRADE 60.
4. RATED FOR PARKWAY LOADING 300 PSF.
5. ALL WALLS ARE 6" THICK, BAFFLES ARE 4" THICK BOTTOM 8" THICK, TOP 10" THICK.
6. JOINT SEALANT: BUTYL RUBBER SS-S-00210

PATENT PENDING

MODULAR WETLAND SYSTEMS INC. P.O. BOX 869 OCEANSIDE, CA 92049 www.ModularWetlands.com		PROPRIETARY AND CONFIDENTIAL	TITLE: <b>MWS-LINEAR                  -VAULT TYPE</b>
DRAWN P. Ashoff	DATE 7.23.07	NAME P. Ashoff	COMMENTS:
SCALE 1:50		UNITS = INCHES	SHEET 1 OF 1